



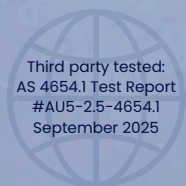
SUSTAINABLE
WATERPROOFING





Australian Engineered

Formulated to endure Australia's toughest conditions, PDQ Poly sets the benchmark in Australia. Engineered in our state-of-the-art Melbourne facility, it's the only Australian made sheet membrane. Our technology delivers unmatched performance backed by warranties and protection to last a lifetime.





Immerse Guard
Pre-primed for
maximum adhesion
of screeds & tile
adhesives.

100 YEAR DURABILITY

Engineered for extreme durability, PDQ Poly is an advanced composite of acrylic-coated PVC and fibreglass mesh. The key ingredient PVC is proven to perform for 100+ years in harsh service conditions.

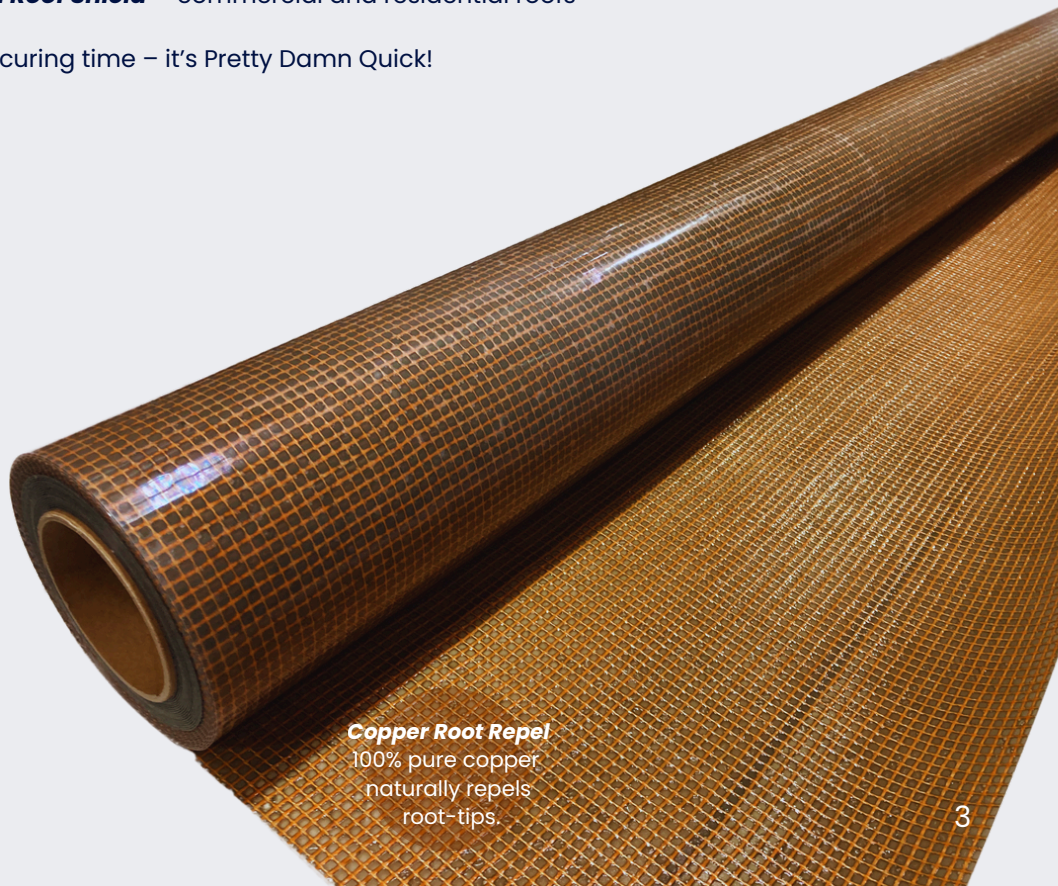
Unlike liquid membrane, PDQ Poly provides long-term protection against hydrolysis, thermal movement and reflective cracking. The integrity of PDQ Poly is superior to liquid membrane in every respect.

It's the ultimate solution for complex remedial work and demanding applications. PDQ Poly's alkaline barrier prevents efflorescence and alkaline attack that liquid membranes cannot match. Performance is 25X any liquid membrane currently on the market.

PDQ Poly is available in three versions:

- **Immerse Guard™** internal & external wet areas
- **Copper Root Repel™** planter boxes and green roofs
- **Titanium Roof Shield™** commercial and residential roofs

And with no curing time – it's Pretty Damn Quick!



Copper Root Repel
100% pure copper
naturally repels
root-tips.

THE PDQ POLY DIFFERENCE

PDQ Poly's engineered 'tensile properties' provide permanent stability. In contrast, liquid membranes are inherently weak and cannot provide long-term protection against movement and reflective cracking.

Tensile Strength

PDQ Poly is the world's strongest sheet membrane, based on three important features:

- 30 MPa tensile-strength is the highest of any membrane.
- A standard 10m roll will resist 30-tonne of tensile force.
- Pod/pedestal point-loading will not damage PDQ Poly.

Mould Protection

Moisture and humidity beneath tile installations can cause microbial growth. PDQ Poly contains natural ion-based protection against black mould, mildew and bacteria.

- Micronised zinc for broad-spectrum antibacterial defence.
- Micronised copper for antifungal protection.
- Non-toxic and safe compared to traditional biocides.

Unique Adhesive

The pressure-sensitive adhesive delivers three unique benefits:

- PDQ Poly can be repositioned during initial application.
- Over time the adhesive migrates and adhesion increases.
- The adhesive remains live and migratable to accommodate vibration and thermal movement.

Multiple Applications

Unparalleled versatility makes PDQ Poly ideal for new construction or remediation. Suitable for internal and external applications in three major segments:

- Balconies, bathrooms and general wet areas.
- Roofs, roof gardens and planter boxes.
- Retaining walls and complex below-grade applications.

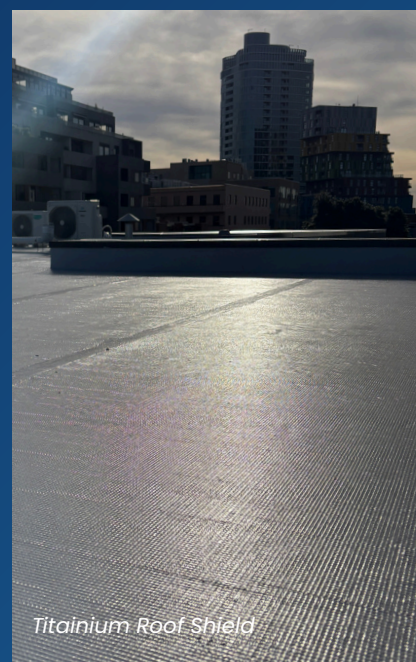
Compliance

PDQ Poly meets or exceeds industry standards:

- AS/NZS 4858 and AS 4654.1.
- ISO 16000-9: indoor air quality (VOCs $\leq 0.05 \text{ mg/m}^2\text{h}$).
- Installations that are compliant with AS 3740 & AS 4654.2 are superior when PDQ Poly is used in place of a liquid membrane.



Immerse Guard (Grey)



Titanium Roof Shield



Copper Root Repel

DESIGNED TO SUIT EVERY SURFACE

A solution for every surface or substrate, select from PDQ's *Immerse Guard*, *Copper Root Repel* or *Titanium Roof Shield* for superior waterproofing of structural flooring, concrete and masonry.



Immerse Guard™

Formulated to provide superior tensile-strength and permanent crack isolation, *Immerse Guard* accommodates structural movement and thermal cycling.

- Exposed balconies and aggressive wet areas.
- Resists chemical attack from soaps and cleaning products.
- Impenetrable alkaline barrier.
- Immediate waterproofing; no drying time required before tiling.



Copper Root Repel™

The world's first and only chemical-free root repelling sheet membrane, *Copper Root Repel* protects waterways from harmful toxins.

- Ultimate waterproofing protection for planter boxes and roof gardens.
- 100% pure copper powder naturally repels root-tip growth.
- No toxic chemicals and herbicides (as found in traditional root-repelling membrane systems).
- Copper-ions (Cu^{2+}) are toxin free and do not pollute rainwater runoff.
For more information, see page 9.



Titanium Roof Shield™

Superior protection for all roof types, *Titanium Roof Shield* provides extreme weather resistance, thermal movement accommodation & proven performance for high-rise, commercial and domestic applications.

- From 1° flat to 45° pitched including complex architectural shapes.
- Self-extinguishing and flame-retardant properties.
- **Cool Guard**™ reflective coatings for up to 15°C temperature reduction.
- **Bio Guard**™ enhanced antimicrobial protection.

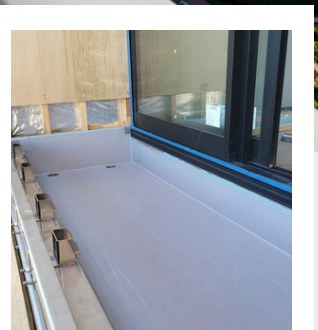


BALCONIES

Designed for exposed balconies and decks, *Immerse Guard* prevents calcium-hydroxide from screeds migrating through to form unsightly efflorescence. Unlike liquid membranes, it can be applied over partially cured cement screeds without the risk of alkaline-catalysed damage.

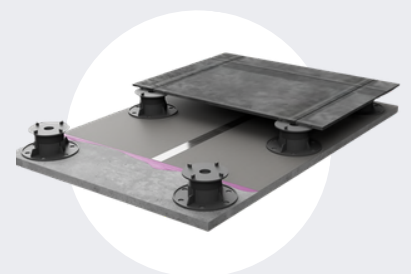
Features

- Alkaline barrier to rising salts
- Tile immediately after application
- Superior pod-system compatibility
- Damp-screed bonding (contact us for advice)



SCAN FOR MORE PHOTOS

Pod/pedestal systems



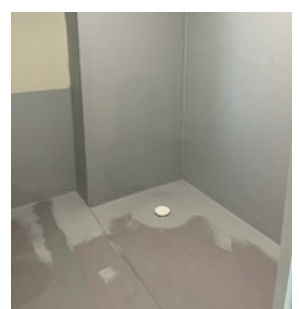


BATHROOMS

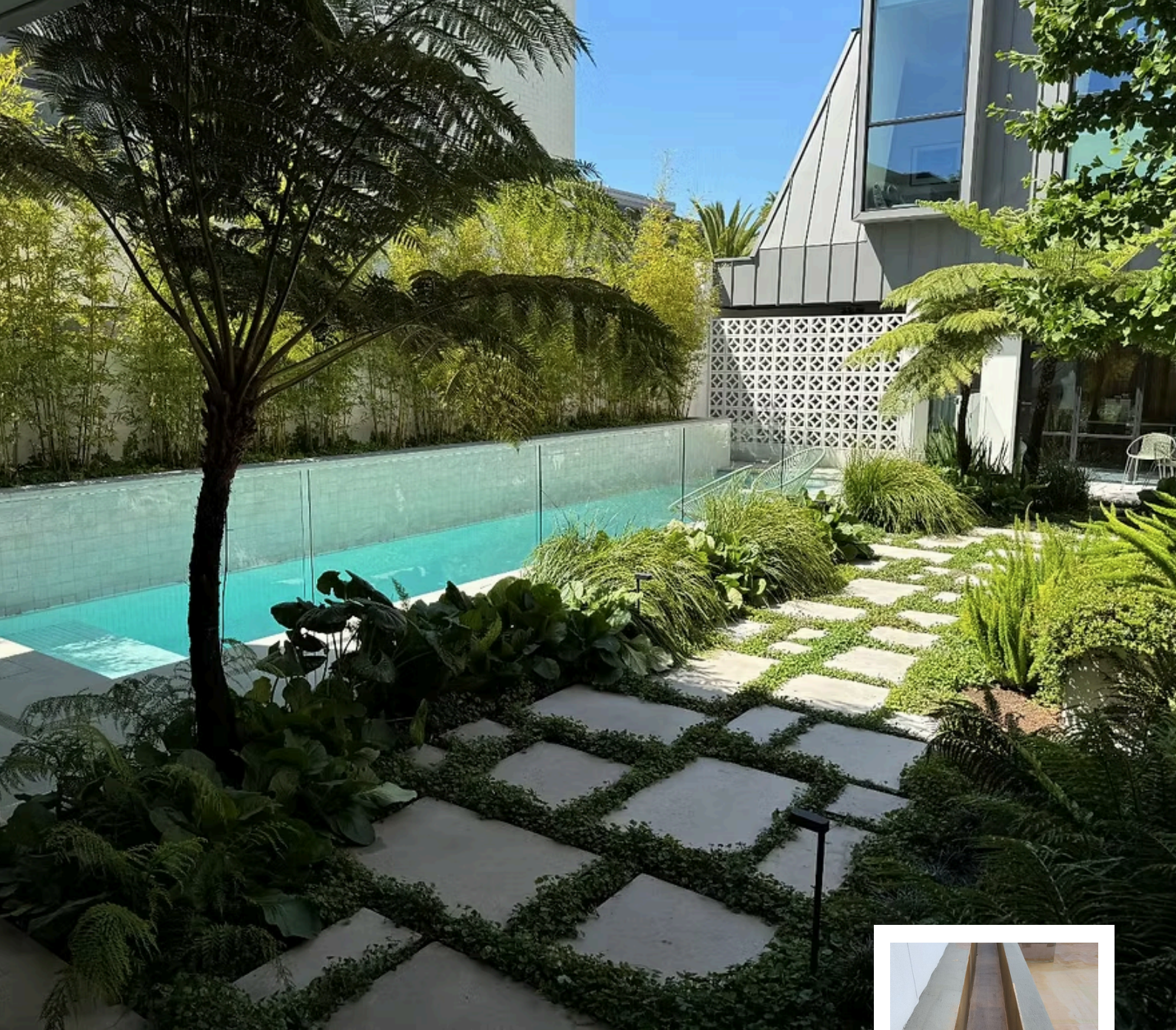
An impenetrable barrier to water and moisture in bathrooms and steam rooms. Over time, moisture migrates through grout and that's where *Immerse Guard* excels by preventing secondary migration into screeds and framing. It provides the added benefit of ion-based protection against black mould, fungal and bacterial growth beneath tiles.

Features

- Protects against black mould & bacteria
- Alkaline barrier to soaps & cleaning products
- Tile immediately after installation
- Compatible with underfloor heating systems



SCAN FOR MORE PHOTOS

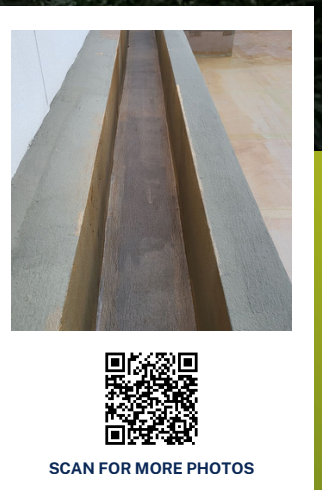


GREEN SPACES

Green roofs are highly demanding applications. PDQ Poly has engineered solutions using *Copper Root Repel* combined with cusped sheeting and drainage risers suited to planter boxes or broad-area beds. Full integration with water features, pools and ponds provides an impenetrable green roof waterproofing solution.

Features

- Engineered solutions for complex installations
- Drainage fitting integration (risers and outlets)
- Cusped drainage-sheet options
- Chemical free and environmentally friendly





PLANTER BOXES

Copper Root Repel™



Copper Root Repel is the ultimate solution for planter boxes and roof gardens. Engineered for sustained protection, it delivers reliable repulsion of root-tips without water-soluble herbicides that commonly lose effectiveness over time.

- 100% Pure micronised copper
- The ONLY herbicide-free root repelling membrane
- Everlasting effectiveness through controlled Cu^{2+} ion release
- No chemical run-off into waterways



SCAN FOR MORE PHOTOS

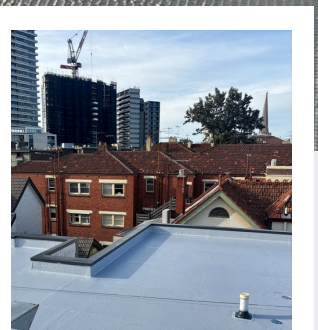


FLAT ROOFS

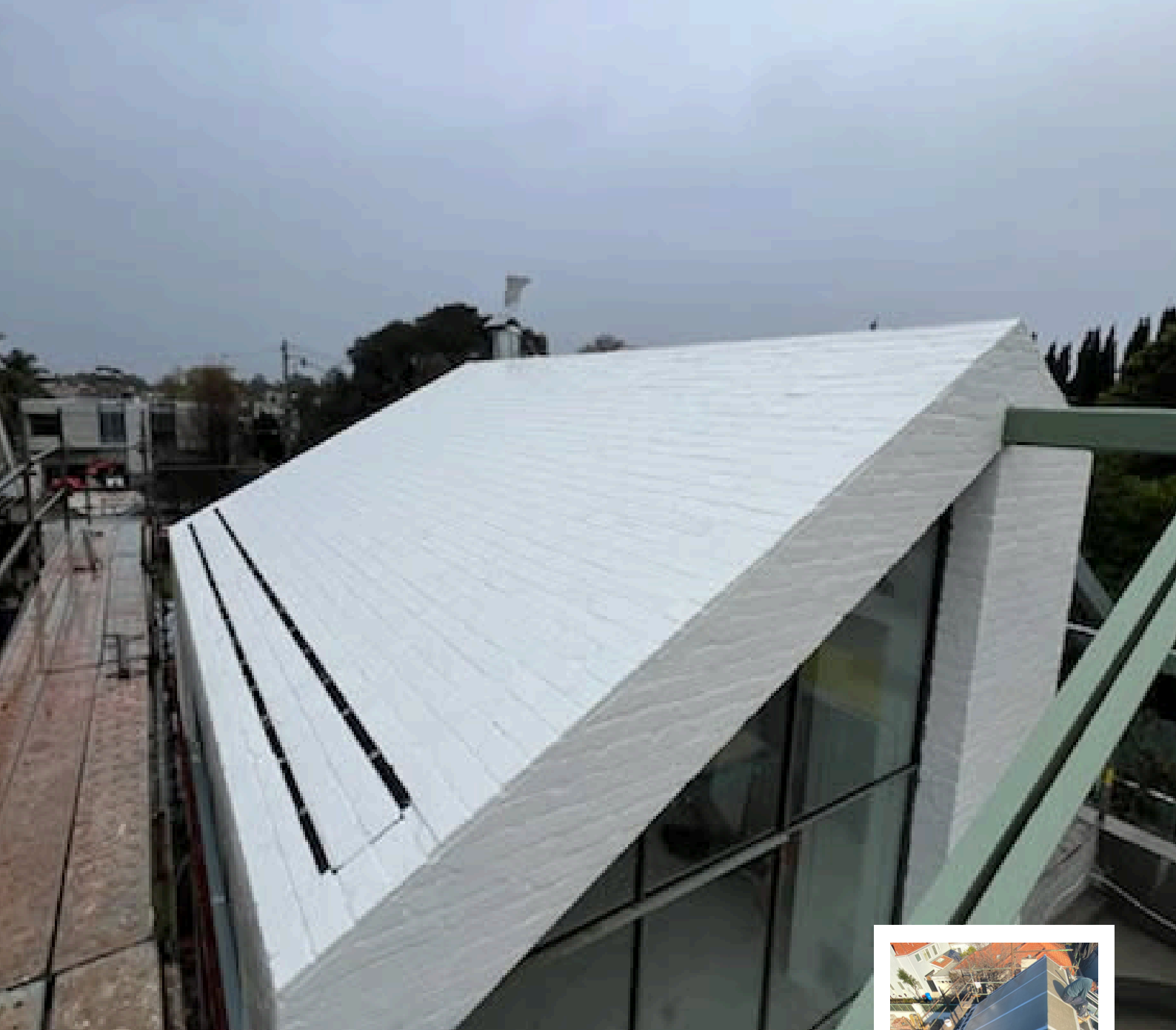
Titanium Roof Shield is ideal for remedial roofing particularly where shape and complexity are an issue. Highly compatibility with insulation upgrades including EPS and XPS foam. Numerous options are available for mounting and safety including slip-resistant coatings with extreme weather resistance.

Features

- Fully bonded; no lateral moisture migration.
- Self-extinguishing PVC with 25 year warranty
- Direct bonding to EPS and XPS insulation board
- Accessories for solar mounting and safety
- Architectural colour matching



SCAN FOR MORE PHOTOS

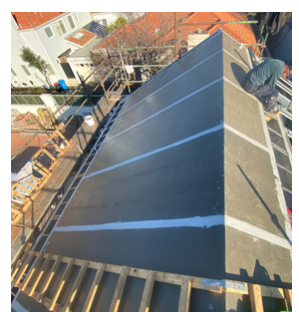


ROOF & FACADE

PDQ Poly is gaining popularity for bricked and ceramic tiled roofs. It offers architectural freedom for shape complexity, multiple angles and irregular geometry roofs. Suited to high-rise, commercial and residential architecture.

Features

- Effective thermal break
- Suitable for tiled roof applications
- Brick on structural plywood installations
- Ceramic tiles on Ply-EPS roof panels



SCAN FOR MORE PHOTOS



BELOW GROUND

Exceptional performance for both positive and negative waterproofing. In positive pressure, *Immerse Guard* is applied to the exterior of the structure, creating a barrier that prevents water from penetrating walls under hydrostatic pressure. In negative pressure, it's applied to the interior surface, preventing water that has already penetrated the wall from entering the building's interior space under reverse hydrostatic pressure.

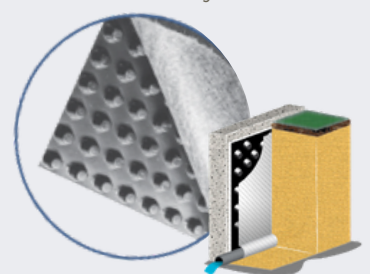
Features

- Basements, retaining walls and tunnels
- Superior to all traditional liquid membranes
- Engineered for new and existing applications
- Integration with ProDrain® sheet systems



SCAN FOR MORE PHOTOS

ProDrain® Geocomposite
Sheet Drain System



PDQ POLY + SOUDAL



The perfect synergy, Soudal's silane-modified polymers (SMX) are the superior solution for joint bonding and surface priming for demanding substrates such as rough concrete or vertical surfaces.

SMX30 Primer

Rough surfaces are a breeze with Soudal SMX30. Low-viscosity and easy to apply, it's perfect for preparing Besser blocks or other rough substrates.

SMX50 Sealant

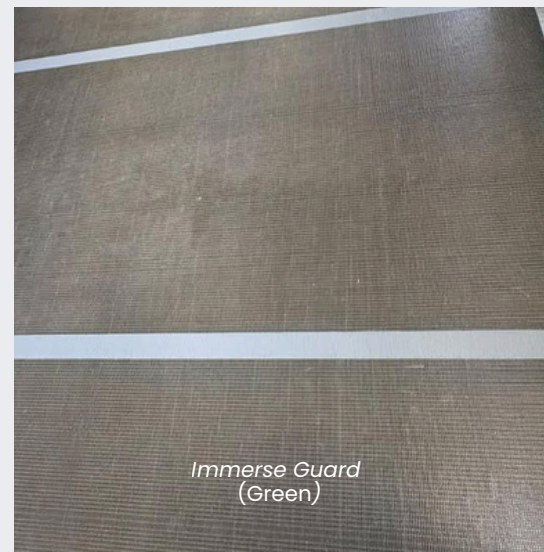
Duplex Joints are 'inelastic composite joints'. They're designed to transfer tensile forces across the membrane for superior crack-isolation. Duplex Joints use Base Tape and Top Mesh Tape coated with Soudal SMX50. Joint thickness is less than 1.2 mm.



Soudal SMX30
Primer



Soudal SMX50
Sealant



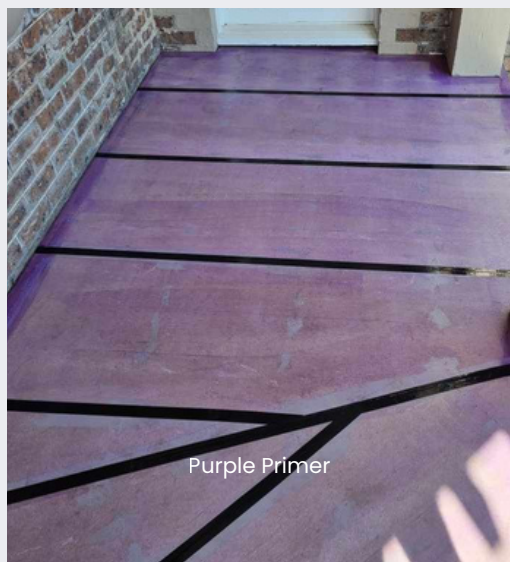
Immerse Guard
(Green)

PDQ Poly Purple Primer

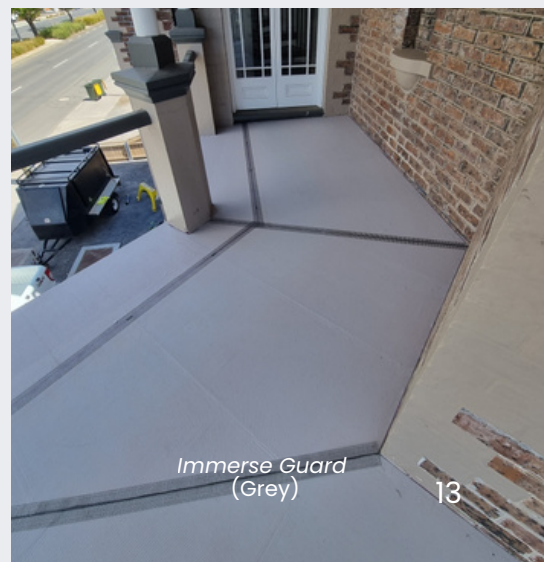
An economical option to SMX30 for many indoor applications on smooth/absorbent substrates, particularly those ingrained with dirt. For example, structural flooring that hasn't been covered during building works or old particleboard after removal of material such as carpet. Prior to application of primer, sand and/or clean substrate.



FC Structural
Flooring



Purple Primer



Immerse Guard
(Grey)

INSTALL OVERVIEW

This method is for a **Duplex Joint**, designed for high-tensile stress transfer. It's the ultimate joint for crack-isolation applications.



STEP 1: Cleaning & set-out

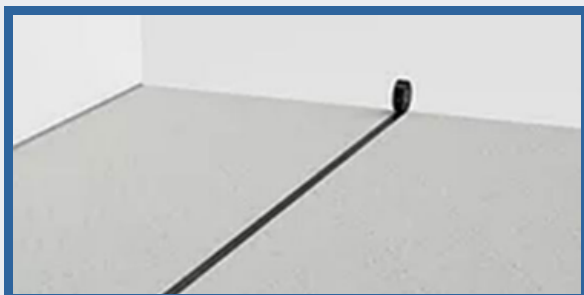
Scrape, broom, vacuum or mop. Check fasteners are flush or below surface.

Check squareness of room and begin chalk-line set-out from a datum that suits the perimeter finish. Apply chalk lines at 1305mm intervals at right angles to the long axis of substrate.



STEP 2: Base taping

Lay self-adhesive Base Tape centrally over the chalk-line and run up the wall 100mm if PDQ Poly is to be turned up the wall (as opposed to being terminated at the wall on Junction Tape).



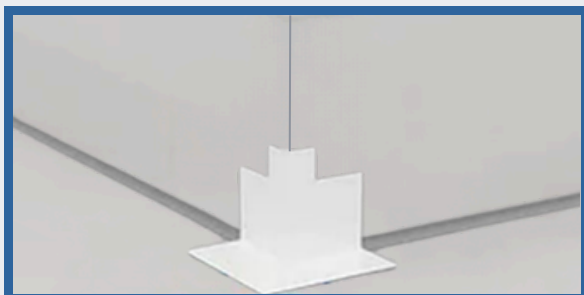
STEP 3: Bond breaker taping

Apply tape over tongue & groove joints to all high-movement structural flooring including: Scyon Secura™, Innova Durafloor™, Cemintel Constructafloor™ and MgO board or similar.



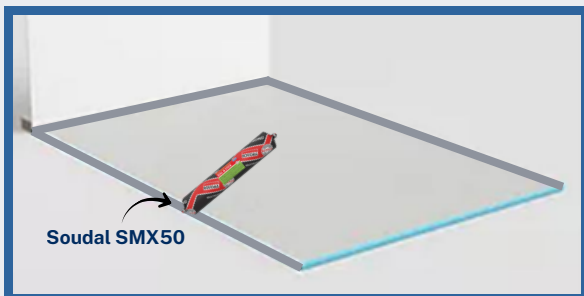
STEP 4: Junction caulking

Caulk wall-floor junctions with Soudal SMX50 and tool into corners to form a concave fillet; 8 x 8mm.



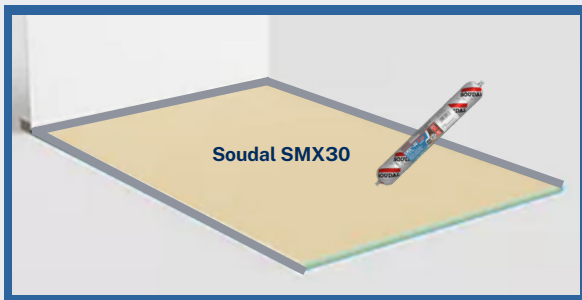
STEP 5: Corner taping

Apply SoudaTape IC (internal corner) or OC (external corner) using SMX50. Ensure the inside surface is generously coated with SMX50 and all air pockets are removed when the IC/OC is pressed into place.



STEP 6: Perimeter priming

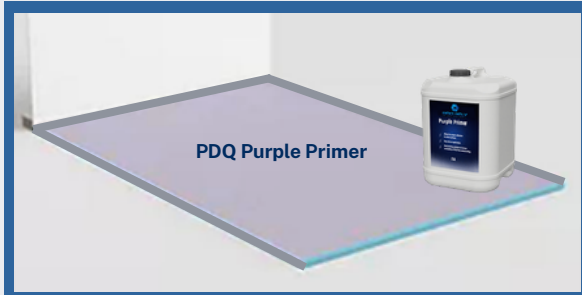
Apply Soudal SMX50 to substrate perimeter and over Base Tape (trowel flat).



STEP 7 : Infill priming (option 1)

Trowel Soudal SMX30 on substrate and lay PDQ Poly on wet SMX30.

Note: For wet areas and demanding substrates (rough concrete/verticals).



STEP 7: Infill priming (option 2)

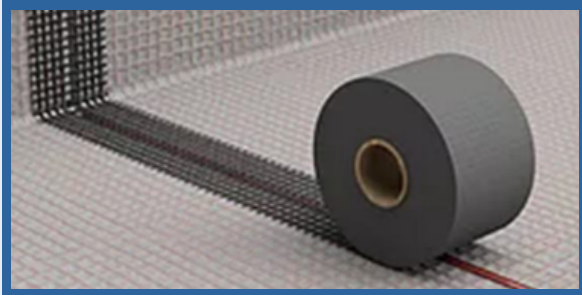
Roller apply two coats (one immediately after the other). Dilute first coat 50% with clean water. Lay PDQ Poly on wet Purple Primer. If delay results in primer skinning, re-prime to achieve wet application.

Note: For indoor substrates (solid/dirty).



STEP 8: Laying

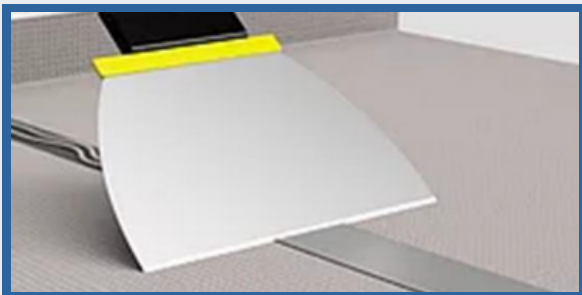
Lay PDQ Poly along the chalk-line (with a 2mm gap). Peel and cut approx. 900mm of release-liner and discard. Check alignment along the full length then stick-down the starter strip only. Peel release-liner from underneath and apply pressure with a float. Alternatively for short runs, remove all the release-liner and lay directly.



STEP 9: Top mesh taping

Apply Top Mesh Tape to full length of joint.

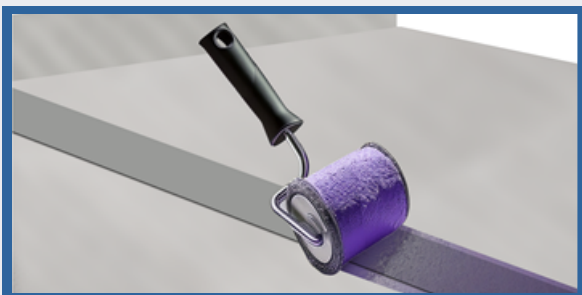
Note: Top Mesh Tape is self-adhesive and will stay in place during application of SMX50.



STEP 10: Joint sealing

Apply masking-tape either side of the Top Mesh Tape then apply SMX50 and trowel flat.

Note: Ensure full coverage then immediately remove masking tape.



STEP 11: Joint over-priming

Prime all SMX50 with Purple Primer (wet-on-wet application is acceptable).

Note: SMX50 must be over-primed as soon as possible. Do not tile over un-primed SMX50.

- IMPORTANT: Do not throw used release-liner (clear film) on the floor, as it may create a slip hazard.
- Hot weather restrictions apply to exterior applications. Always apply on a hot day followed by a cold day. The opposite may result in some persistent bubbles.
- Roll out PDQ Poly with coating facing up (avoid bending sharply backwards).
- C2S1 CTA is recommended for general applications.
- C2S2 CTA is recommended for crack-isolation applications.
- This overview covers high-movement structural flooring. Consult PDQ Poly for alternative substrates.
- Conduct testing prior to application. All technical data is subject to change without notice. E&OE.

PDQ POLY SPECIFICATIONS

COMPLIANCE

- AS 4654.1: waterproofing membranes for external above ground use
- AS/NZS 4858: wet area membranes
- ISO 16000-9: indoor air quality; VOCs emissions $\leq 0.05 \text{ mg/m}^2\cdot\text{h}$

MATERIAL

- Thickness: <1mm
- Composition: reinforced PVC-acrylic composite
- Extensibility: Class III (AS 4654.1)

ROLL SIZE

- Trade roll: 1.3m x 10m in carton
- Bulk roll: 1.3m x 250m on steel stillage

HIGH TENSILE STRENGTH

- >30 MPa (ISO 527-3)
- One 10m roll will resist up to 30-tonne of force
- Engineered crack isolation membrane

HEAT RESISTANT

- Continuous to $\leq 85^\circ\text{C}$
- Intermittent to $\leq 120^\circ\text{C}$

MOULD RESISTANT

- Contains natural copper and zinc for antimicrobial protection.
- Copper particles: Defends against black mould and mildew
- Zinc particles: Defends against microbial contamination

APPLICATION

- Indoor & outdoor wet areas
- General floors

SUITABLE SUBSTRATES

- Magnum board
- Particle board
- Plywood
- Tongue & groove
- Cement sheet
- Cementitious screeds
- Concrete slabs
- Concrete blocks
- Aerated concrete
- Ceramic/stone tiles
- Stainless/mild steel
- Linoleum
- Coolroom panel
- Underfloor heating

WARRANTY

- **25 years** on the PVC sheet against manufacturing defects & UV degradation under normal exposure conditions*
- **10 years** for material performance defects under normal service conditions*

SOUDAL & PDQ POLY

- Rough/absorbent substrates are primed with SMX30 immersion-resistant primer.
- Joints are bonded with SMX50 immersion-resistant sealant.
- Corners are prepared with SoudaTape ICs/OCs coated with SMX50.

*Full warranty available at www.pdqpoly.com.au

PDQ POLY AS 4654.1 TEST REPORT

Results Summary			
Property	Method	Result	Assessment
Bond strength to plywood	ASTM C794	42.7 N	-
Bond strength to concrete	AS 4654.1 App. B	22.5 N	-
Cyclic-movement	AS 4654.1 App. B	No failures	Class III
Dimensional stability MD	ASTM D6207	No permanent instability	-
Dimensional stability CD	ASTM D6207	No permanent instability	-
Elongation to break MD (control)	AS 4654.1 App. A	309%	Class III
Elongation at break CD (control)	AS 4654.1 App. A	326%	Class III
Heat ageing MD	AS 4654.1 App. A	288%	Pass >50% of control
Heat ageing CD	AS 4654.1 App. A	281%	Pass >50% of control
Temperature resistance MD	AS 4654.1 Clause 2.6	300%	Pass
Temperature resistance CD	AS 4654.1 Clause 2.6	299%	Pass
Tensile strength MD	AS 4654.1 Table A4	33 MPa	-
Tensile strength CD	AS 4654.1 Table A4	31 MPa	-
Thickness	Calliper (mean n=50)	<1mm	-
Durability in water	AS 4654.1 Table A4	288%	Pass >25% of control
Durability in water	AS 4654.1 Table A4	279%	Pass >25% of control
Water vapour transmission rate	ASTM E96	1.7 g/m ² /day	-

TEST FACILITY

Chloralka
24/69 Acacia Road
Ferntree Gully 3156

APPARATUS

Constant climate chamber:
Binder KBF 720.

Cyclic movement tester:
Admet eXpert 4000.

Exp. temperature chamber:
Binder KBF Pro 260.

Universal testing machine:
Mecmesin MultiTest-dV 2500.

FACILITY COMPLIANCE



ISO 4: Management
ISO 5: Technical
ISO 6: Resource
ISO 7: Process
ISO 8: Systems

STATEMENT OF COMPLIANCE

PDQ Poly complies with AS 4654.1–2012. All requirements are met pursuant to the obligations of:

- R 2.2 Conformance Conditions.
- R Appendix A; A1 General.
- R Appendix B; B1 Scope.

Unlike one-off test reports, PDQ Poly is revalidated whenever there's a formula improvement or raw material adjustment. This on-going revalidation is superior to 3rd party test reports which can be up to 3 years (CSIRO/XTec Gen) or 5 years (BRANZ) outdated.

Surveyors/certifiers are welcome to visit our laboratory to verify batch-specific tensile properties, or for comparison to other products.

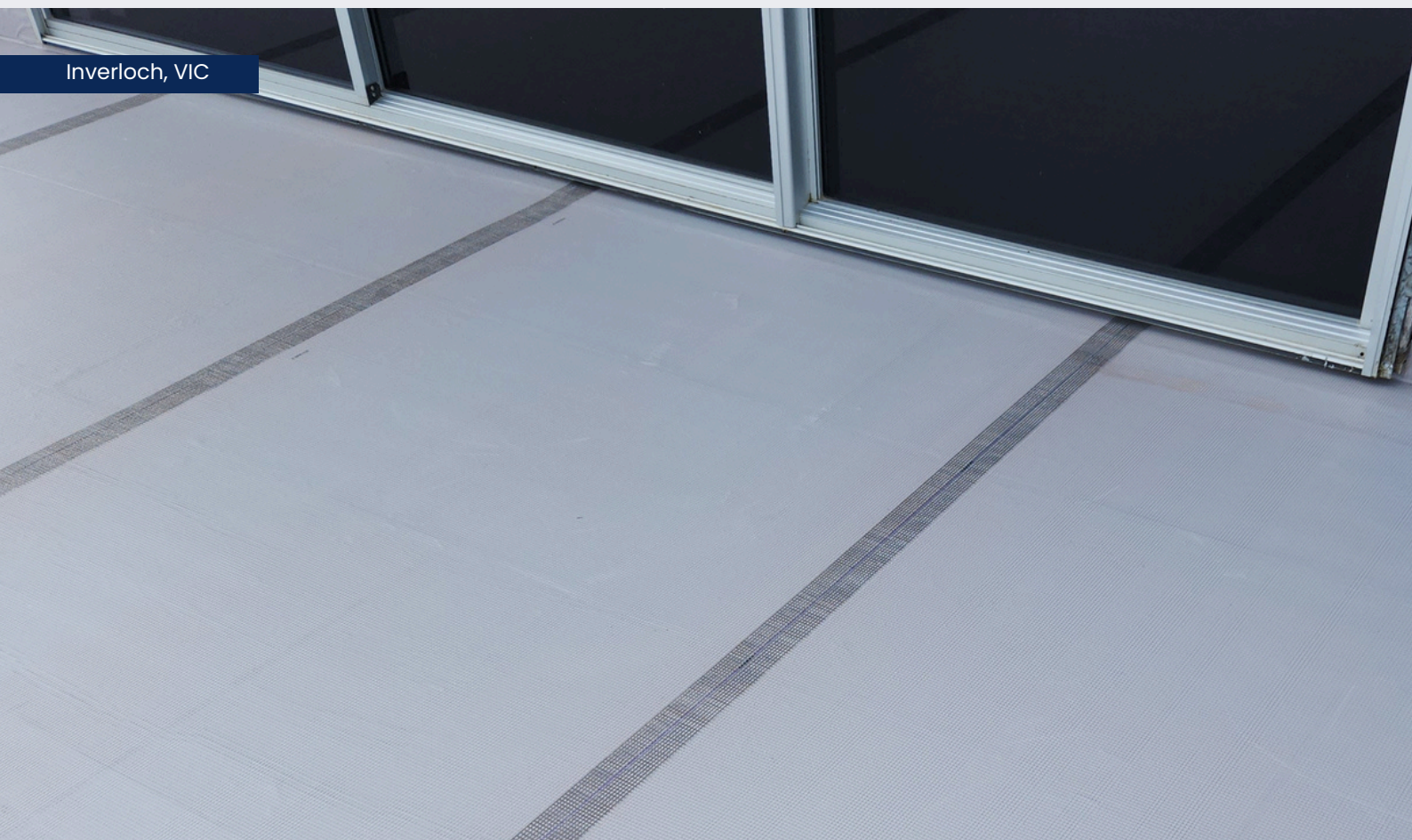


SCAN FOR FULL
TEST REPORT

Middle Park, VIC



Inverloch, VIC



Eaglemont, VIC



South Yarra, VIC



Red Hill, VIC



PDQ POLY MANUFACTURING

A fully integrated operation, PDQ Poly incorporates compounding, coating, laminating, converting and laboratory services. This complete in-house process allows for strict quality control at every stage of production; from raw material handling through to finished product testing.

By managing each step, PDQ Poly ensures consistent performance, streamlined production and innovative waterproofing solutions that meet the highest industry standards. Large projects (job lots) are supplied with a batch test report for additional peace of mind.



PDQ Poly manufacturing facility
Ferntree Gully, Australia



Seek Together™

We exclusively use Dow resins produced by Dow Performance Materials (Australia).

The DOW Diamond is a registered trademark of Dow Inc.
Seek Together is a trademark of Dow Inc.



PDQ POLY™



PDQ Poly Titanium Roof Shield
Portsea, VIC

PDQ Poly reserves the right to change the information hereon without notice. 06/11/2026

17/69 Acacia Road Ferntree Gully, Victoria 3156
(03) 9758 0555 or 0418 331 043
sales@pdqpoly.com.au

